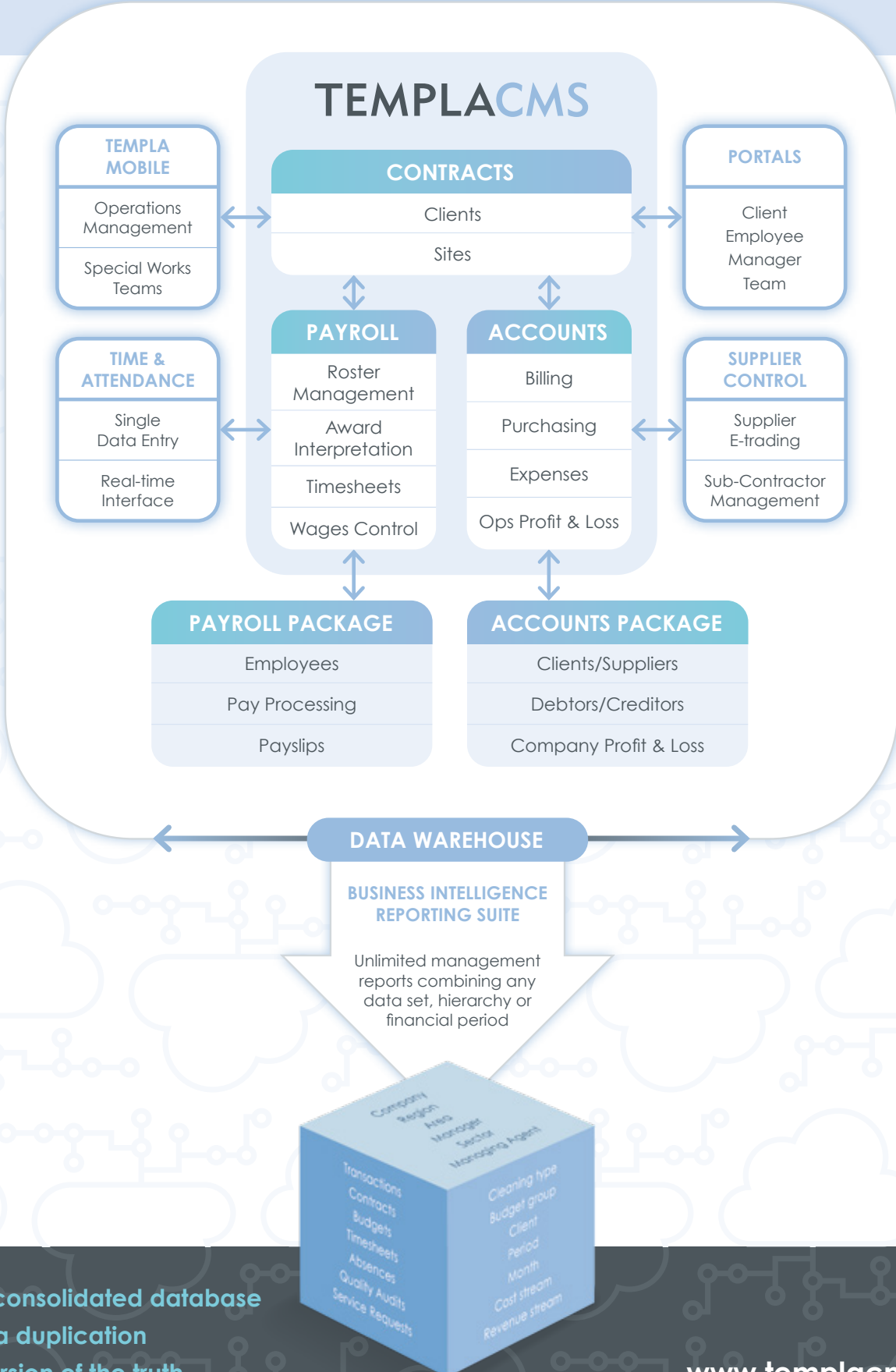


DYNAMIC INTEGRATION



- Single consolidated database
- No data duplication
- One version of the truth

WHAT DO WE MEAN BY INTEGRATED SOFTWARE?

Dictionary Definition:
“organized or structured so that constituent units function cooperatively”

TemplaCMS is a modular solution where each module will link to the other seamlessly; this design strategy is the foundation for extending integration out to external systems and stakeholders to help you manage your business from end to end.

How is TemplaCMS integrated internally?

The reason we call TemplaCMS an integrated system is because each of its business modules shares the same data source in order to process your company's business transactions. There is only one version of the data – held in the single, central contracts database. This makes it simple to update and eliminates data errors.

How does TemplaCMS integrate externally?

PAYROLL

TemplaCMS links dynamically to any recognised payroll software, sharing employee details. Electronic, real-time timesheets provide payroll and operations managers with accurate up to date information, managing multi-site employees' pay and holiday. Employees may view payslips, company information and other personal data through TemplaCMS Employee Portal.

BILLING

Client contract billing is automatically generated in line with contract terms at pre-agreed intervals. Supplementary charges for consumables and one-off work, whether carried out by internal teams or subcontractors, are integrated into the billing process, with flexible options on document presentation and delivery.

TIME AND ATTENDANCE

TemplaCMS delivers a 2-way interface with any recognised time and attendance software, using single data entry to drive the database setup in both systems. Employees' worked hours directly enter our real-time timesheets which are then fully reconciled to contracted hours and budgets.

CLIENTS

TemplaCMS Customer Portal offers access to contract, financial and operational data and documents. This can include cleaning specifications, periodic work schedules, outstanding invoices, quality audit results and help desk service requests. Franchisors can also manage the flow of data between themselves and their franchisees.

What is the TemplaCMS difference?

Our clear objective in product design is for dynamic integration of data and software whenever possible, as manual file export and import is unreliable and time consuming. As well as being more accurate, dynamic integration saves valuable time both in field operations and administration. It makes information more immediately available, to the right people at the right time, presenting a professional image to staff and clients alike.

TemplaCMS is the ultimate solution to the complex world of the cleaning contractor.

ACCOUNTS

TemplaCMS links dynamically to any recognised accounts software, sharing client and supplier details. Full cost and revenue stream analysis, along with budgets, offer full and accurate financial control of sites, clients, operations and the company, with profit reporting at the touch of a button.

OPERATIONS

The Templa Mobile app integrates both operations management and special works teams to the central system. Tasks such as completing quality audits, ordering stores, managing periodic and one-off work or site equipment, are all available. User-defined forms extend the ability to alleviate operations admin, e.g. new starters.